



Simi Valley Landfill and Recycling Center

Looking Ahead



Committing to the community

For more than 30 years, the Simi Valley Landfill and Recycling Center (SVLRC) has served the disposal and recycling needs of residents in Ventura County, south Santa Barbara County and west San Fernando Valley. SVLRC is committed to keeping our local communities clean, recovering reusable resources from the waste stream and preserving open space for wildlife habitat.

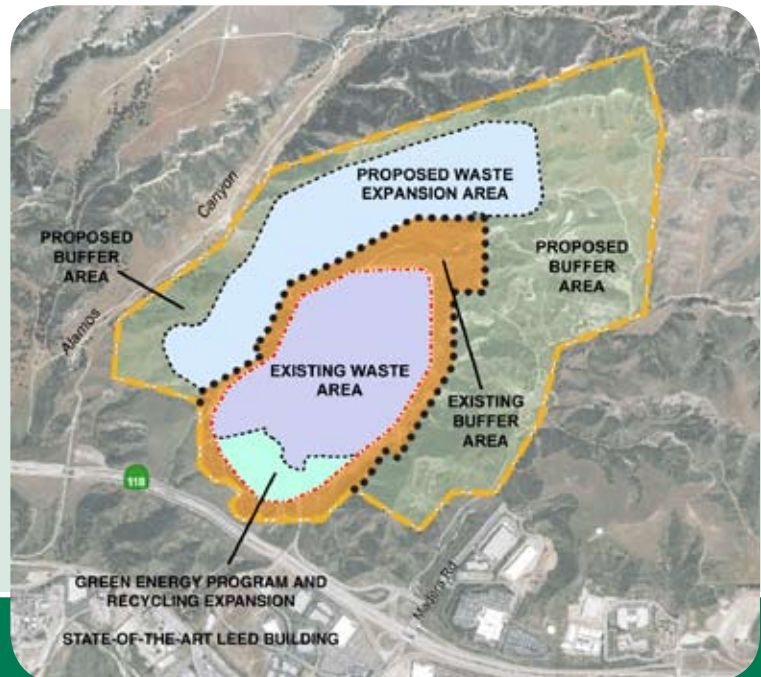
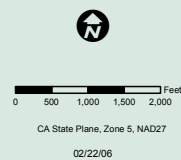
Expansion at a glance:

- Create open space and wildlife habitat around landfill of 516 acres
- Increase landfill footprint to 371 acres
- Expand recycling capabilities with:
 - Construction of Material Recovery Facility (MRF)
 - Recyclables Transfer Facility (RTF)
 - Environmental Collection Center (ECC)
- Expand green energy program to provide electricity for 6,250 local homes
- Install LNG (Liquefied Natural Gas) fueling station
- Relocate G.I. Industries operations to the landfill site
- No increase in permitted total daily tonnage (fixed at 9,250 TPD)

Simi Valley Landfill and Recycling Center Expansion - Existing and Proposed Land Usage

Legend

- Existing Site Property Boundary
- Proposed Site Property Boundary
- Permitted Waste Boundary
- Existing Waste Area
- Existing Facilities and Facilities Expansion Area
- Proposed Waste Expansion Area
- Proposed Buffer Area
- Existing Buffer Area



Learn more or take a tour!

Simi Valley Landfill and Recycling Center
 2801 Madera Rd., Simi Valley, CA 93065
 Tel. (805) 579-7267 Fax (805) 579-7482



Why the Modernization and Expansion Project is Good for the Community

1. **MAINTAINS MORE THAN 275 GOOD-PAYING JOBS** in Ventura County
2. **INJECTS MORE THAN \$48 MILLION** annually into the Ventura County economy
3. **CONTRIBUTES MORE THAN \$3.6 MILLION** to public agency budgets within Ventura County
4. **IMPROVES RECYCLING** options and increases environmentally-friendly programs
5. **INCREASES PRODUCTION** of enough green energy to power 6,250 local homes
6. **ESTABLISHES ONE OF THE FIRST LEED FACILITIES** at a landfill in the county by using recycled and sustainable building materials, energy-efficient lighting, green energy programs and recycled water
7. **REDUCES TRUCK TRAFFIC** on the Madera Corridor by moving local trucking operations to landfill
8. **CREATES OVER 500 ACRES** for open space and wildlife habitats
9. **PROVIDES MORE CHARITABLE CONTRIBUTIONS**, including annual sponsorships, charitable service donations and employee volunteer support

